

ACCELERATE, COMPRESS & ENCRYPT DATABASE BACKUPS

SQL safe™

SOLUTIONS FOR BACKUP & RECOVERY

Idera SQL safe provides a high-performance backup and recovery solution for Microsoft® SQL Server®. SQL safe saves money by reducing database backup time by up to 50% over native backups and reducing backup disk space requirements by up to 95%. SQL safe also enables complete 'hands-free' automated backup of your entire SQL Server infrastructure and ensures compliance with your organization's backup and recovery policies. From implementations with tens of SQL servers to enterprises with hundreds of servers spread around the globe, SQL safe is the only SQL Server backup and recovery solution that scales to meet the challenge.

PRODUCT HIGHLIGHTS

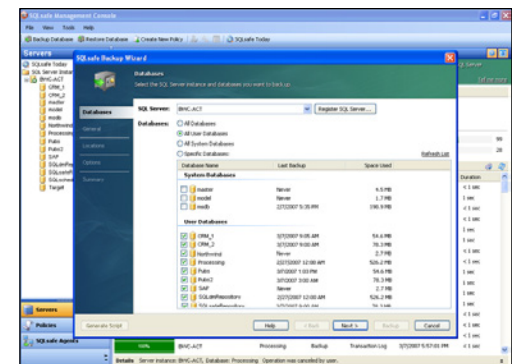
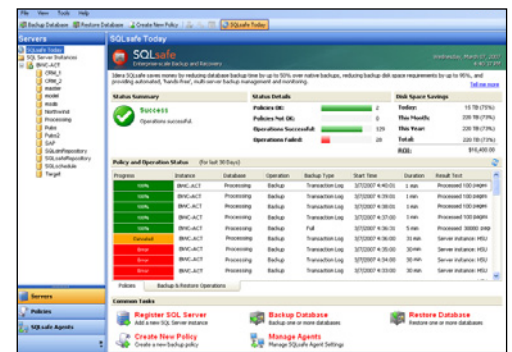
- Fast, compressed & encrypted backup and restore
- Save space – compress files by up to 95%
- Save time – at least 50% faster than native backups
- Central management of backups enterprise-wide

The SQL safe management console makes it fast and easy to execute backup and restore operations on multiple servers and databases at the same time. Real-time monitoring and a repository of historical information ensure that your critical backup and recovery operations are easily and effectively managed.

The SQL safe innovative IntelliRestore feature provides graphical point in time recovery using a sliding time scale. Simply choose a point in time and SQL safe backup will automatically assemble all the backup components necessary to restore the database to the specified point in time.

"Now that we have SQL safe, full backup time on one of our servers is down from 100+ hours to 30 hours or less. This is an incredible time considering the amount of data we're backing up!"

- DATA/SYSTEM ARCHITECT, HEALTHCARE INFORMATION SERVICES COMPANY



WHY SQL safe?

In many organizations today, SQL Server databases are the repository for large volumes of business critical data. As database size grows, the time required for backup via native tools can easily exceed maintenance windows. Restore operations also become time-consuming, and huge amounts of storage space are needed for the backups. DBAs need a powerful backup and recovery solution that greatly reduces backup and recovery time, minimizes storage requirements, and provides enterprise management capabilities to conduct backups across a large numbers of servers simultaneously. SQL safe has been specifically designed to meet these requirements, resulting in increased application and business availability for your critical SQL Server infrastructure.



DOWNLOAD A FREE EVALUATION TODAY AT WWW.IDERA.COM

SQL safe

ACCELERATE, COMPRESS & ENCRYPT DATABASE BACKUPS

KEY BENEFITS

Maximizes backup file compression: SQL safe's new patent-pending IntelliCompress2™ technology continually samples system resource usage and automatically adjusts the compression level to ensure the best compression given the state of the environment.

Reduces backup time dramatically: SQL safe contains highly advanced compression, disk writing and multi-threading technologies that dramatically increase the speed of backup execution. Reducing backup time increases the available window in which to perform other critical SQL Server maintenance activities.

Reduces failures due to network glitches: SQL safe greatly reduces the possibility of a failure due to a network problem. If a temporary network outage occurs, SQL safe will simply pause and pick up where it left off once the network is back online.

Accelerates mean time to recovery: SQL safe has been engineered to perform well when you most need it – in an emergency recovery situation. With SQL safe's innovative IntelliRestore™ graphical point-in-time recovery, DBAs simply use a sliding time scale to select a recovery point and SQL safe automatically assembles all the backup components necessary to restore the database to the specified point in time.

Ensures compliance with corporate backup policies: SQL safe offers unique Policy based backup management which enables DBAs to define and automate a backup schedule across multiple servers and databases. This greatly simplifies the task of setting up and managing backup and log shipping schedules and provides exception reporting to highlight any jobs that did not complete as scheduled.

TECHNICAL FEATURES

HIGH PERFORMANCE BACKUP AND RECOVERY

- **IntelliCompress2™ Technology:** Provides state of the art technology that continually samples system resources and automatically adjusts the compression level to produce the smallest backup in the fastest possible time.
- **IntelliRestore:** Offers innovative IntelliRestore™ graphical point in time recovery. Using a sliding time scale, choose a point in time, and SQL safe backup will automatically assemble all the backup components necessary to restore the database to the specified point in time.
- **Network Resilient:** Eliminate backup failures due to temporary network outages by pausing and then resuming from the point where it left off once the network comes back online.
- **Encryption:** Provides AES 128 and AES 256-bit encryption with less than 0.5% performance degradation.
- **Backup Mirroring:** Quickly and easily write duplicate backup files to different locations during a single backup operation.
- **Runs outside SQL Server Process space:** Eliminates risk and increases performance by running as a separate process outside the SQL Server process space. SQL safe does not install any additional databases, DLLs, scripts, stored procedures or tables on the SQL Server instances.

ENTERPRISE MANAGEMENT FEATURES

- **Centralized Management Console:** Provides a central enterprise console with real-time monitoring of current backup and restore operations as well as historical backup and restore information.
- **Central Repository:** All backup and restore information is stored in a central repository to enable full auditing of backup history across the enterprise.
- **Backup and Log Shipping Policies:** Quickly and easily create, manage and monitor backup and log shipping jobs to ensure backups and restores perform as specified.
- **Alerting:** Receive an SMTP email or event log alert when failures or missed operations occur in your environment.

- **Reports:** Provides a comprehensive catalog of customizable reports delivered using Microsoft SQL Server Reporting Services.
- **Tivoli Storage Manager Integration:** Provides an interface to IBM Tivoli Storage Manager (TSM) for permanent, state-of-the-art storage of SQL safe backup files.
- **Scriptable Interface:** Provides multiple interfaces –enterprise console, command-line and XSP.

SYSTEM REQUIREMENTS

MANAGEMENT CONSOLE,

- Windows 2000 SP4, Windows XP SP3, Windows 2003 SP2, Windows 2008 SP1, Windows Vista SP1, Windows 7, Windows 2008 R2
- Microsoft .NET 2.0 SP1

MANAGEMENT SERVER AND DATA REPOSITORY:

- Windows 2000 SP4, Windows XP SP3, Windows Server 2003 SP2, Windows 2008, Windows Vista SP1, Windows 7, Windows 2008 R2
- Microsoft .NET 2.0 SP1
- Repository: SQL Server 2000 SP4, SQL Server 2005 SP1+, SQL Server 2008, SQL Server 2008 R2

BACKUP AGENT:

- Windows 2000 SP4, Windows XP SP3, Windows Server 2003 SP2, Windows 2008 SP1, Windows Vista SP1, Windows 7, Windows 2008 R2
- Microsoft .NET 2.0 SP1
- SQL Server 2000 SP4, SQL Server 2005 SP1+, SQL Server Express, SQL Server 2008, SQL Server 2008 R2

SUPPORTED TSM ENVIRONMENTS

- TSM Client version 5.4, 5.5, 5.6, 6.1, 6.2 TSM Server version 5.4, 5.5, 5.6, 6.1, 6.2

SQL safe does not require the installation of any additional databases, DLLs, scripts, stored procedures, or tables on the SQL Server instances.

Idera | BBS Technologies

802 Lovett Blvd Houston, Texas 77006

PHONE 713.523.4433 | TOLL FREE 877.GO.IDERA (464.3372)

FAX 713.862.5210 | WEB www.idera.com



DOWNLOAD A FREE EVALUATION TODAY AT WWW.IDERA.COM