



25 INCREDIBLY USEFUL TOOLS FOR SQL SERVER

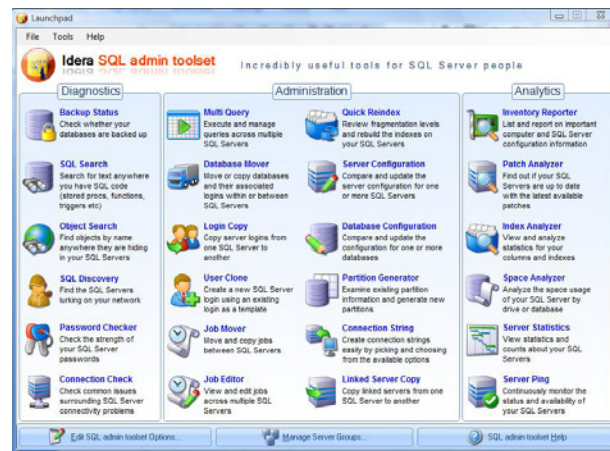
Are you a DBA or developer tired of spending countless hours on routine administrative and troubleshooting tasks, like figuring out why a user can't connect, or moving databases, or producing reports for your boss to show that the backups really did run, or finding rogue SQL Servers, or checking configurations? Yes, we know, the list is endless.

If the answer is yes, then you need our SQL admin toolset. Packed with 25 powerful tools that will make troubleshooting, administration and reporting such a breeze you'll be wondering what to do with all the spare time you have on your hands - really!

SQL admin toolset™

PRODUCT HIGHLIGHTS

- 25 essential desktop tools for monitoring, troubleshooting, administering and reporting on your SQL Servers
- Reduces administrative tasks from hours to minutes
- Eliminates time spent developing, testing and maintaining customer scripts
- Value priced at \$295 for all 25 tools - less than \$12 a tool!



DIAGNOSTIC TOOLS

1. Check whether your databases are backed up
2. Search for text anywhere you have SQL code (stored procs, functions, triggers etc..)
3. Find objects by name anywhere they are hiding in your SQL Servers
4. Find the SQL Servers lurking on your network
5. Check the strength of your SQL Server passwords
6. Diagnose connection problems, quickly determine why users can't reach your SQL Servers Site

ANALYTICS TOOLS

7. Get a list of everything important about your SQL Servers, including version, hardware and more
8. Report and analyze your SQL Server version levels
9. Analyze your indexes for usage patterns and sizes. Determine if you need more, less etc...
10. Analyze the space usage of your SQL Server by drive or database
11. View loads of statistics about your SQL Server
12. Keep a constant eye on the status of your SQL Servers

ADMINISTRATION TOOLS

13. Execute and manage queries across multiple SQL Servers
14. Move or copy a database and associated logins across servers or relocate data files
15. Copy server logins across SQL Servers
16. Create a new user using an existing user as a template
17. Move and copy between servers
18. View and edit jobs across multiple SQL Servers
19. Quickly review and rebuild the indexes on your SQL Servers
20. Compare and edit server configuration for one or more SQL Servers
21. Compare and edit database configuration for one or more databases
22. View existing partition information and generate new partitions
23. Wade the multitude of options for connection strings and create your own in seconds
24. SQL Server Linked Copy Tool-Quickly and easily copies linked servers from one server to another
25. View and manage the pinned status of your tables (SQL Server 2000 and earlier only)

Try it now for free!

Download the SQL admin toolset at www.idera.com/toolset