

BACKUP & RECOVER SHAREPOINT

Idera SharePoint backup™

SOLUTIONS FOR BACKUP & RECOVERY

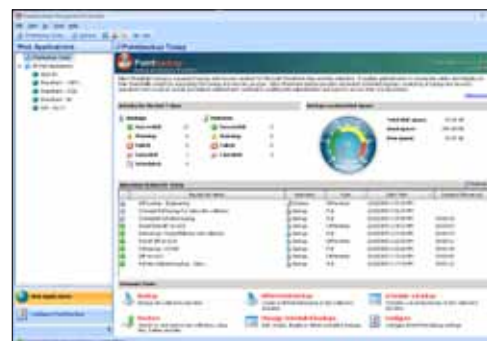
Idera SharePoint backup is a powerful backup and recovery product for Microsoft SharePoint sites and site collections. It enables administrators to ensure the safety and integrity of their SharePoint content by automating the backup and recovery process. Idera SharePoint backup provides automated scheduled backups and monitoring of backup and recovery operations from a central console. It also reduces administrator workload by enabling site administrators and users to recover their own documents. Idera SharePoint backup also saves on storage costs by employing powerful compression technology to reduce backup file sizes by up to 95%.

PRODUCT HIGHLIGHTS

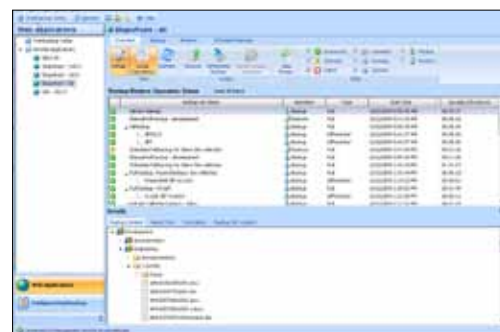
- SharePoint 2010 backup and restore support
- Powerful content search capabilities for document recovery
- Automated scheduling of backups
- Self-service document recovery for site users
- Central management of backup and recovery operations
- Save space – compress backups by up to 95%
- Differential backups save time and storage space
- Compelling load balancing and fault tolerance capabilities

(1) **The Idera SharePoint backup 'Today Page'** provides an at-a-glance summary of your SharePoint backup and recovery operations, making it easy to ensure that all of your SharePoint content is protected.

(2) **The Idera SharePoint backup management console** provides a central point of control to manage, execute, and monitor backup and recovery operations across multiple farms.



1



2

Why Idera SharePoint backup?

SharePoint has become the most adopted ECM (Enterprise Content Management) system in the market. It has become the 'repository' in which companies store critical documents, and manage critical company information, processes and workflows. It is essential that SharePoint site collections and sites have their content properly protected using an automated backup process. This process must automate backup operations and enable easy, quick and reliable recovery of all levels of information, from site collections, sites and folders to lists and even individual documents. Idera SharePoint backup does all this, and presents a single, easy-to-use solution to the problem of SharePoint content protection.

KEY BENEFITS

Fast retrieval and recovery of SharePoint content: Searching for objects (sites, folders, documents, etc.) across backups is a time-consuming and challenging task that can take days or even weeks! Idera SharePoint backup has an innovative and powerful IntelliSearch™ engine that searches across multiple backups. This enables users to quickly retrieve the objects they require, whether an entire site collection or an individual document. Recovery and retrieval operations that used to take weeks can now be accomplished in minutes, with a couple of clicks.

Self-service SharePoint Recovery™: For site collection and site owners! In many companies, SharePoint is used by thousands of users and stores hundreds of thousands or even millions of documents. Obviously it is impossible for a SharePoint farm administrator to handle all the requests for content recovery generated by these users. Idera SharePoint backup provides the ability for site collection and site administrators to recover their own content. This is accomplished by an easy to use Web part that enables users to search, browse backups and recover their documents. Site collection administrators and site owners don't need to wait forever for a single document to be restored by a farm admin, and farm admins don't need to spend hours or days handling requests for document recovery, a true win-win situation!

Idera SharePoint backup

BACKUP & RECOVER SHAREPOINT

KEY BENEFITS, cont'd

Easy to use! Caters to 'accidental administrators': Recognizing that many organizations don't have dedicated full-time SharePoint administrators, or don't have enough of them, Idera SharePoint backup was designed to be easy to use by anybody, no matter what their level of SharePoint expertise. Initiating backup and recovery operations is straightforward and easy using the Ribbon user interface and wizards. Users can also view the status of operations in real time using an easy to understand progress monitor.

Backup automation: Idera SharePoint backup provides a powerful and flexible scheduling engine that ensures your content is always protected. Backup jobs may be scheduled as required—hourly, daily, weekly—whatever is appropriate for the volatility of your content. In addition, load balancing and fault tolerant operation features ensure that your backups run efficiently each and every time.

Reduced Backup Storage: Backup site collections and sites according to how often critical information is changed. Specific sub-sites may need to be backed up more often and entire site collections may only need to be backed up once a month. Idera SharePoint backup enables you to backup site collections and sites independently, as often as you wish, depending on your business needs. Also Idera SharePoint backup uses Idera's IntelliCompress™ data compression engine to reduce the size of backup files by up to 95%. This provides significant savings in storage costs!

Only backup content that has changed!

Running full backups of entire SharePoint site collections or sites requires large amounts of disk space, lengthy backup operations, and unnecessary backups of unchanged, duplicated data. It's both time consuming and costly! With Idera SharePoint backup, users can easily execute manual or scheduled differential backups of just content that has changed since the last full backup, saving administrators time and valuable storage space.

TECHNICAL FEATURES

- **Scheduler:** Backup site collections and sites on a scheduled basis.
- **Historical view:** Provides an overview of all Backup and Recovery jobs executed, along with their status and operational detail such as which objects were backed up or recovered, when and where.
- **IntelliSearch™:** Search for any type of SharePoint object across backup sets; from site collections and sites to individual documents.
- **Differential Backups:** Save time and storage space by backing up only the content that changed since the last full backup.
- **Granular Recovery:** Restore site collections, sites, folders and lists, list items and documents. Restore contents in-place, out-of-place or to your local machine.
- **Full Recovery:** Complete recovery of all SharePoint content including properties, security settings, and replacement of existing list items and documents.
- **Quick Restore:** Enables you to restore only the content that is missing from the current SharePoint environment.
- **Self-service recovery:** An easy to use web part provides the ability for site collection and site owners to recover single or multiple documents.
- **SharePoint backup today:** Provides a daily summary of all backup and recovery operations, as well scheduled backup tasks. Provides an overview of how much of your SharePoint content is protected and backup storage utilization.
- **IntelliCompress™:** An innovative compression engine that intelligently selects the best compression method to be applied to the SharePoint content being backed up.
- **Easy-to-use UI:** Allows difficult backup and restore tasks to be executed quickly and easily.
- **Alerts:** Email alert notification on backup and restore success, failure, load balancing statuses, low disk space and much more.
- **Grooming:** Automatic grooming of backup history and backup set files.
- **FIPS Compliance:** Internal security functions, such as password management, are compliant with FIPS 140 Federal Information Processing Standard.

ENTERPRISE MANAGEMENT FEATURES

- **Enterprise-class scalability:** Large numbers of site collections, sites, lists and folders, item lists and documents can be backed up and restored quickly and efficiently.
- **Central management console:** A single place to configure, execute and monitor all your backup and recovery operations across all your SharePoint Farms and Servers.
- **Central Management Repository:** Stores historical information on all backup and recovery operations as well as backup schedule data in a central repository, allowing a true view of how protected your SharePoint content is and easy access to content that has been backed up.
- **Load balancing:** Balance the load of your backup and restore operations across multiple SharePoint servers.
- **Fault tolerant Operations:** Automatic failover in the event of a network or server outage

SYSTEM REQUIREMENTS

MANAGEMENT CONSOLE, SERVICES AND DATA REPOSITORY

- 32-bit Windows 2000 SP4, Windows XP SP2, Windows Server 2003 SP2, Windows Vista, Windows Server 2008
- 64-bit Windows 2003 SP1 or SP2 (x64), Windows XP Professional or Windows Vista x64 and Windows Server 2008, and Windows Server 2008 R2
- Microsoft .NET Framework 3.5 SP1 and MDAC 2.8 SP1
- Monitor capable of displaying 16bit color or greater and a resolution of 1024x768
- Repository: SQL Server 2000 SP4, SQL Server 2005 SP1 or SP2, SQL Server 2008, SQL Server 2008 R2

SUPPORTED SHAREPOINT SERVERS

- Windows SharePoint Services (WSS) 3.0
- Microsoft Office SharePoint Server (MOSS) 2007
- Microsoft SharePoint Foundation 2010
- Microsoft SharePoint Server 2010

Idera | BBS Technologies

802 Lovett Blvd Houston, Texas 77006

PHONE +1 713.523.4433 | TOLL FREE 877.GO.IDERA (464.3372)

FAX +1 713.862.5210 | WEB www.idera.com



DOWNLOAD A FREE EVALUATION TODAY AT WWW.IDERA.COM